

Subscribe to the Mailing List



Welcome to the 1st AnNex Newsletter

We hope you will find the content of interest. It is our intention to publish between 2 & 3 editions a year to keep all our stakeholders up to date with progress on the project. We would like to take this opportunity to express our thanks to the Wellcome Trust for their support and backing throughout the life of the project



Engagement

Engagement is something that is becoming more and more commonplace in biomedical research. As the expectation on researchers to be open and transparent increases, so they need to find ways to engage with the patient groups and publics who are set to benefit from their work.

Engagement is therefore a key focus of the Animal Research Nexus project. Not only are we

interested in the ways that laboratories are opening their doors to people, both literally and metaphorically, but also in the ways that we ourselves can engage with the public.

Engagement can be a catalyst for conversation and generate a shared understanding of a historically controversial topic. Done creatively, it can challenge assumptions, both for the public and also for us as researchers. This is why we are always trying to diversify our audiences and look for new and innovative ways to involve patient groups, stakeholders and the general public.

Research News in this Edition

Supporting Patient and Public Involvement

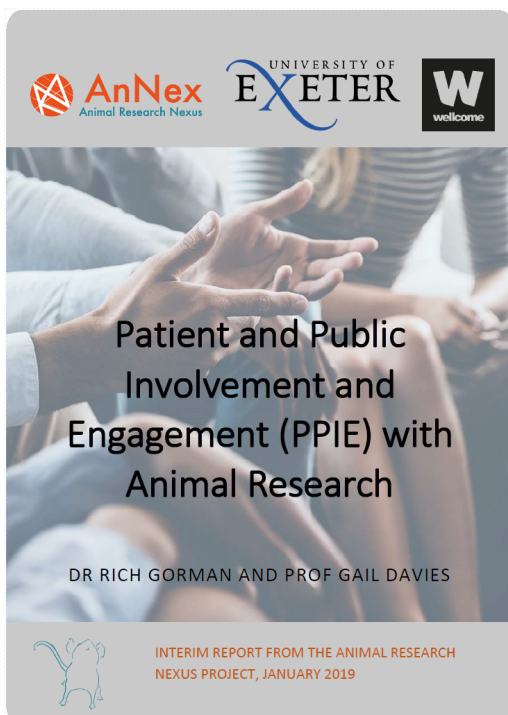
Exchanging Mice

World Building in Manchester

Psychic Fish

Did you come alone?

Would you like to collaborate?



Supporting Patient & Public Involvement

Gail Davies & Rich Gorman on talking about animal research in patient involvement

We have been using qualitative research methods to trace the ways in which lay members and publics are encountering animals within biomedical research. We are



The Mouse Exchange

Sara Peres on an imaginative way to get people talking and thinking

This innovative project is designed to get people thinking and talking whilst creating their own little mouse. A simple idea, beautifully put together, allows even the most unimaginative person the opportunity to create something lovely whilst thinking about the experience of others.

[Read the Blog](#)

seeking to understand how involvement and engagement activities can be organised in ways that are sensitive to the diverse experiences of lay members, researchers, and others involved, and open up authentic and meaningful conversations.

[Read the Report](#)



World Building

Bentley Crudginton on Immersive Theatre

If you are in the North West in late March, then join us at Naimos in Manchester and participate in Vector, our immersive collaboration with The Lab Collective, an interactive experience which uses elements of performance, game and integrated technology to open up dialogue and shed light on the ethics that society faces in using animals as part of medical research. Booking essential. Contact [Bentley](#) for further information

[Find Out More](#)



Psychic Fish

Beth Greenhough et al on a big question at Science Uncovered Manchester

Do you need to care about something to care for it? This was the underlying question posed to visitors at the Science Uncovered Festival in Manchester in the autumn. Everyone was given a 'psychic fish' as a way to initiate conversation and thought about whether fish feel pain and ultimately whether researchers need to care about something in order to be able to care for it. Using this and other creative activities allowed people the opportunity to open up about their thoughts in an informal manner.

[Read the Blog](#)

Did you come alone?

Bentley Crudginton on an intimate way of engaging the public

Can a performance engage people on a one-to-one basis and get them thinking about the other lives – human and, critically, non-human - that play a constitutive role in human health? Participants were taken through a 10-minute experience

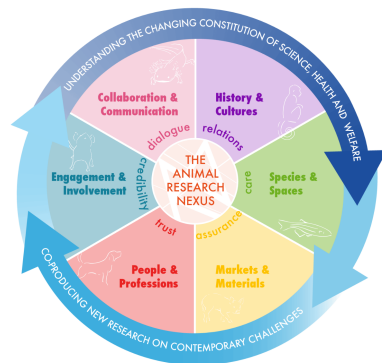


designed to draw out immediate reactions and challenge preconceptions and stereotypes.

[Read the Blog](#)

Would you like to collaborate?

We are currently reviewing our collaborations with a view to formalising and publicising some of our relationships. If you currently work with the AnNex team, or would like to be included on our website, please contact animalresearchnexus@exeter.ac.uk or [Gail Davies](#) for further information.



Copyright © 2019 Animal Research Nexus, All rights reserved.

Want to change how you receive these emails?
You can [update your preferences](#) or [unsubscribe from this list](#).

