



Encounters and Engagements

Prof Gail Davies & Dr Rich Gorman, University of Exeter

G.F.Davies@exeter.ac.uk ; R.Gorman@exeter.ac.uk

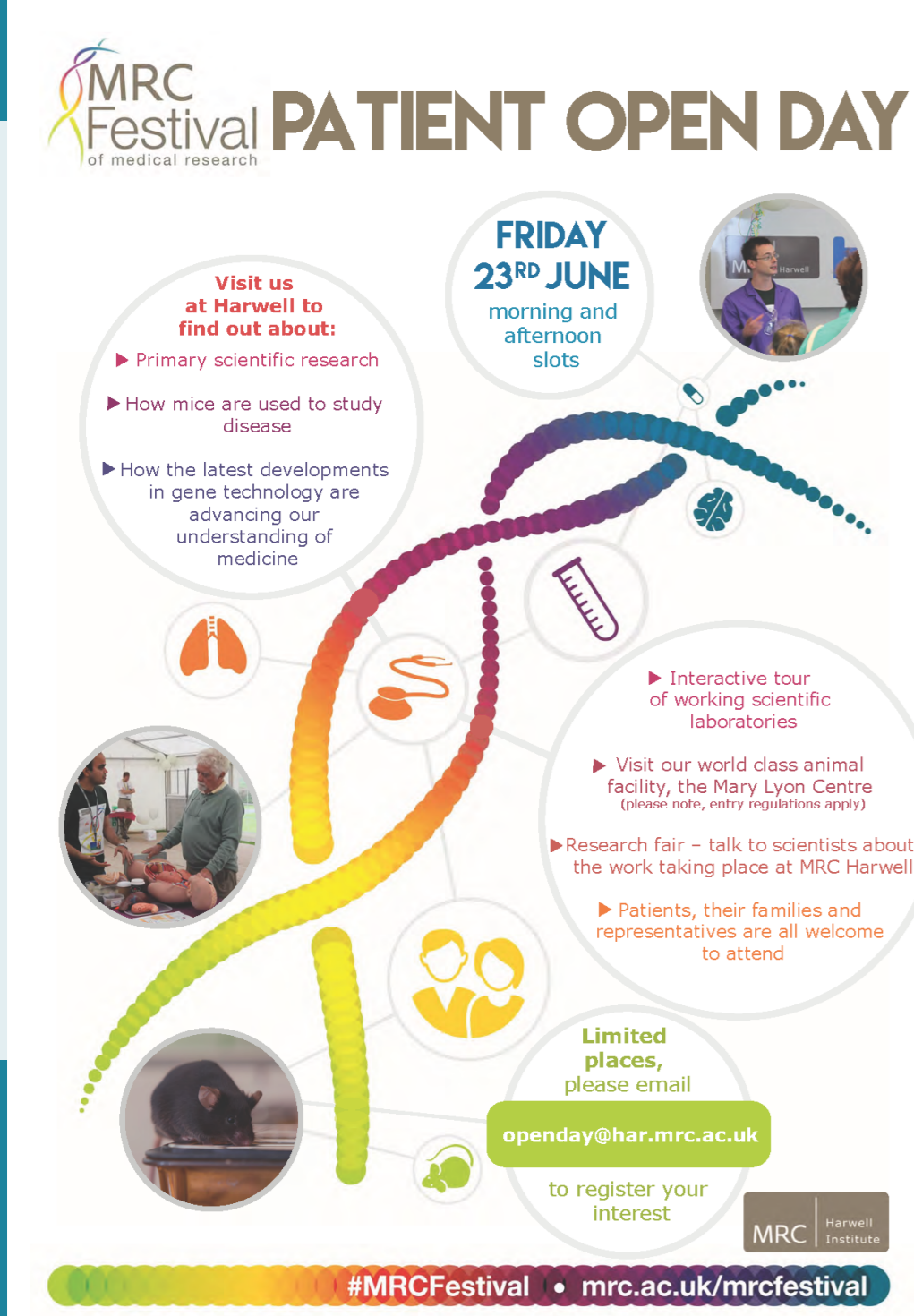
Patients, Publics, and the Animal Research Nexus

Biomedical research is increasingly expected to be open and transparent, to translate laboratory findings into new drugs and treatments for humans and animals, and to engage the publics and patients who stand to benefit from these developments.

These demands are leading to new forms of patient and public involvement across healthcare and clinical science. Patient and public involvement in basic and animal research is less well established. It raises practical questions for practitioners, can be a challenging experience for participants, and may change understandings around animal research in unexpected ways.

Our work seeks to understand how patients, publics, and practitioners can engage meaningfully around animal research. We are studying current participation activities, listening to challenges, exploring future opportunities, gathering evidence, and will be sharing emerging good practice.

We value your additions to: 1) the sites we are exploring, 2) the emerging opportunities for involvement, and 3) your reflections on the implications of growing patient and public involvement across the animal research nexus.



Encountering animal research

We are tracing the ways in which people affected by health conditions are encountering animal research to understand their experiences. Our work includes taking part in and talking to people involved in:

- Patient tours at animal facilities like MRC Harwell (*pictured above*) and public engagement events at the MRC Brain Network Dynamics Unit at the University of Oxford (*pictured below*)
- Medical research charities and supporters who are funding scientists and seeking to represent patient voices in research
- Academic and commercial scientists who are working to integrate patient involvement in their research practices
- People affected by health conditions whose interests, or treatments, are bringing them into contact with animal research

MRC BNDU, Oxford @MRCBNDU

Hosting a site visit for local @ParkinsonsUK groups. Luke discusses lab techniques used in studying Parkinson's Disease #MRCFestival



These encounters are part of a complex emotional landscape around the animal research nexus. Our research is exploring how involvement can be organised so that it is sensitive to the diverse experiences of participants, researchers, and others involved.

Emerging involvement opportunities

Involvement also has potential scientific and social consequences. We are interested in how people affected by health conditions might contribute to biomedical research practices and the outcomes of animal research through:

