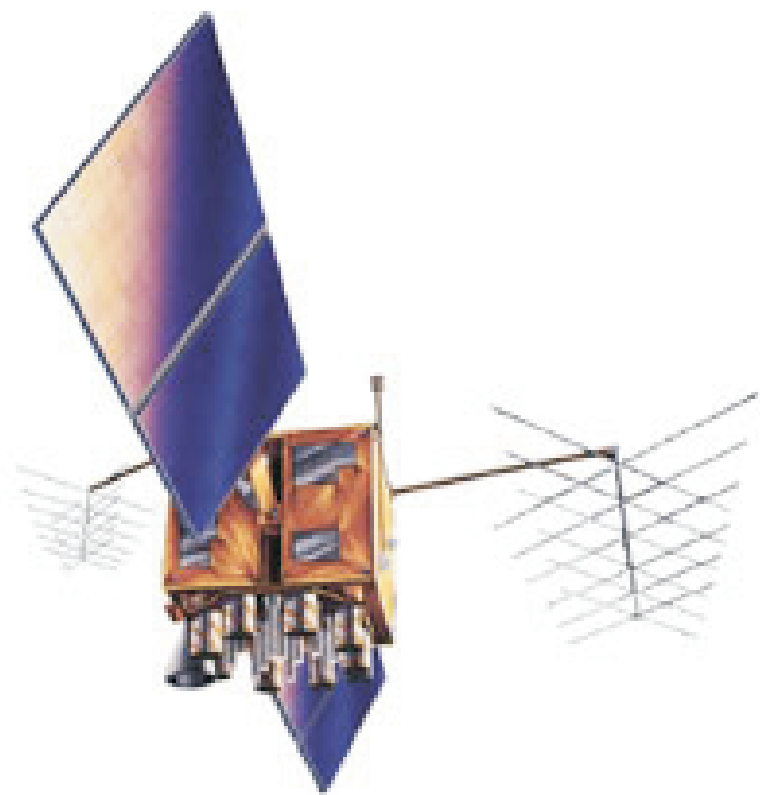


Knowledge Intensive Fusion For Situational Awareness.

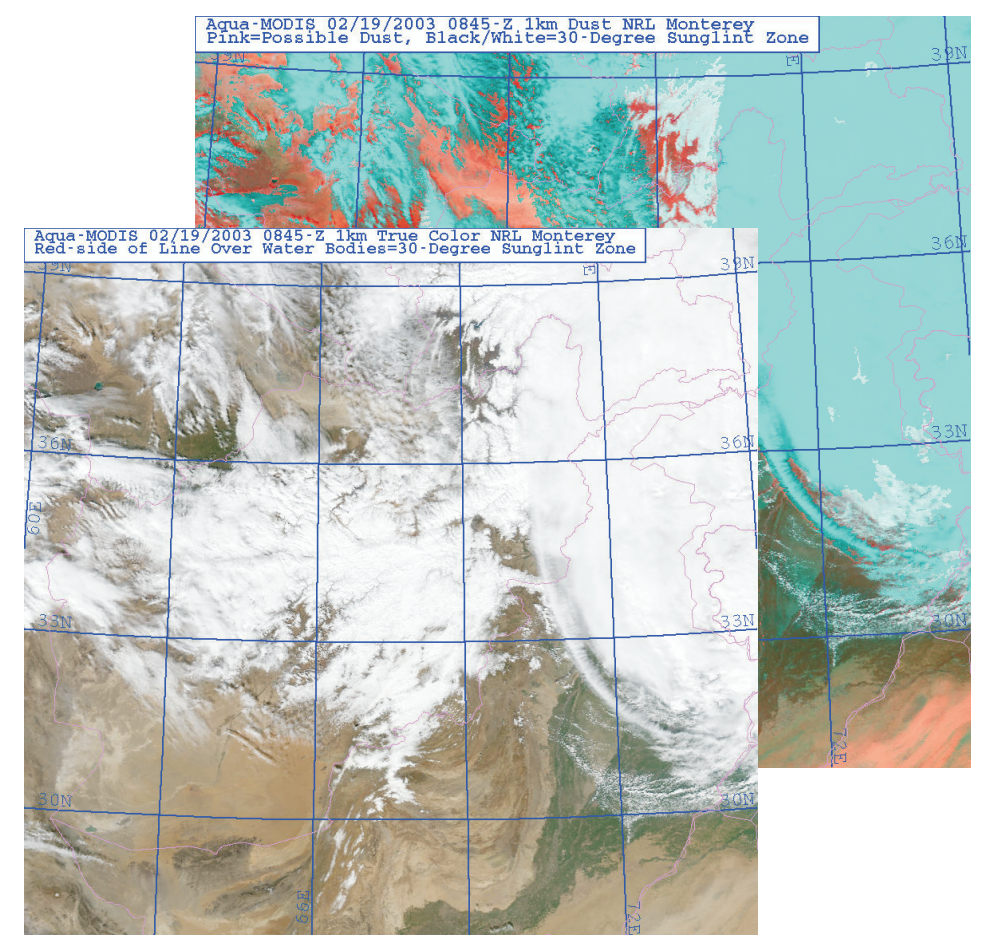
Nigel Shadbolt, Leslie Carr, monica schraefel



Intelligence, Agents, Multimedia Group,
The University of Southampton



A knowledge-guided environment to
accomplish intelligent information...



PROCESSING

Using the knowledge models to
reason over the incoming streams
of information, generating new
knowledge, summaries,
predictions, guidance, and direct
attention.



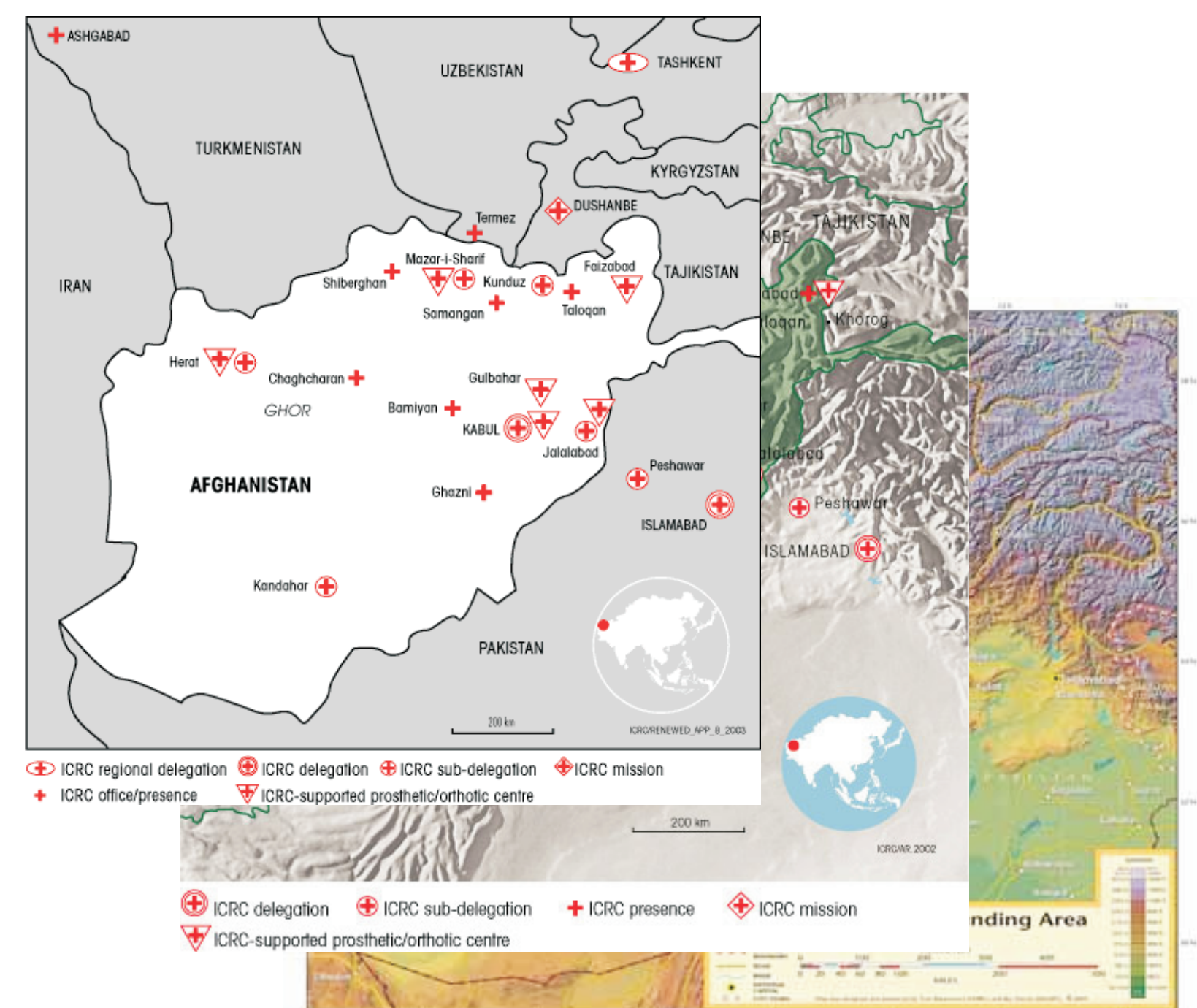
FUSION

Using formal knowledge models (inc
ontologies) of the sources, user roles
and tasks to perform the aggregation
task.



INTERACTION

Supporting effective
visualisation of and interaction
with diverse information sources
as a decision-making aid



Project 8.14